



AGENZIA INTERREGIONALE PER IL FIUME PO
AIPO

UFFICIO OPERATIVO DI PARMA

Opere idrauliche di 2° categoria R.D. 11.02.1867 n. 3598

PROGETTO

Importo Complessivo €. 1.250.000,00

(RE-E-1005) LAVORI URGENTI DI RIPRESA FRANA SPONDALE IN DESTRA IDRAULICA DEL F. ENZA IN CORRISPONDENZA DI C.NA BERNUZZA E DISBOSCAMENTO SPONDALE E RISEZIONAMENTO ALVEO PER MIGLIORAMENTO CONDIZIONI DI DEFLUSSO IN TRATTI SALTUARI NEL COMUNE DI BRESCELLO

CUP B88H23000840001

ALLEGATO

ELABORATI GRAFICI

7

Gruppo di Progettazione :

ISTRUTTORE IDRAULICO
(Geom. Luca Zilli)

FUNZIONARIO SPEC. TECNICO
(Dott. Ing. Andrea Reverberi)

Visto : IL RESPONSABILE DEL PROCEDIMENTO
(Dott. Ing. Monica Larocca)

PERIZIA N° 1252

DATA: 20 feb. 2024

PROT. N°

AGGIORNAMENTI

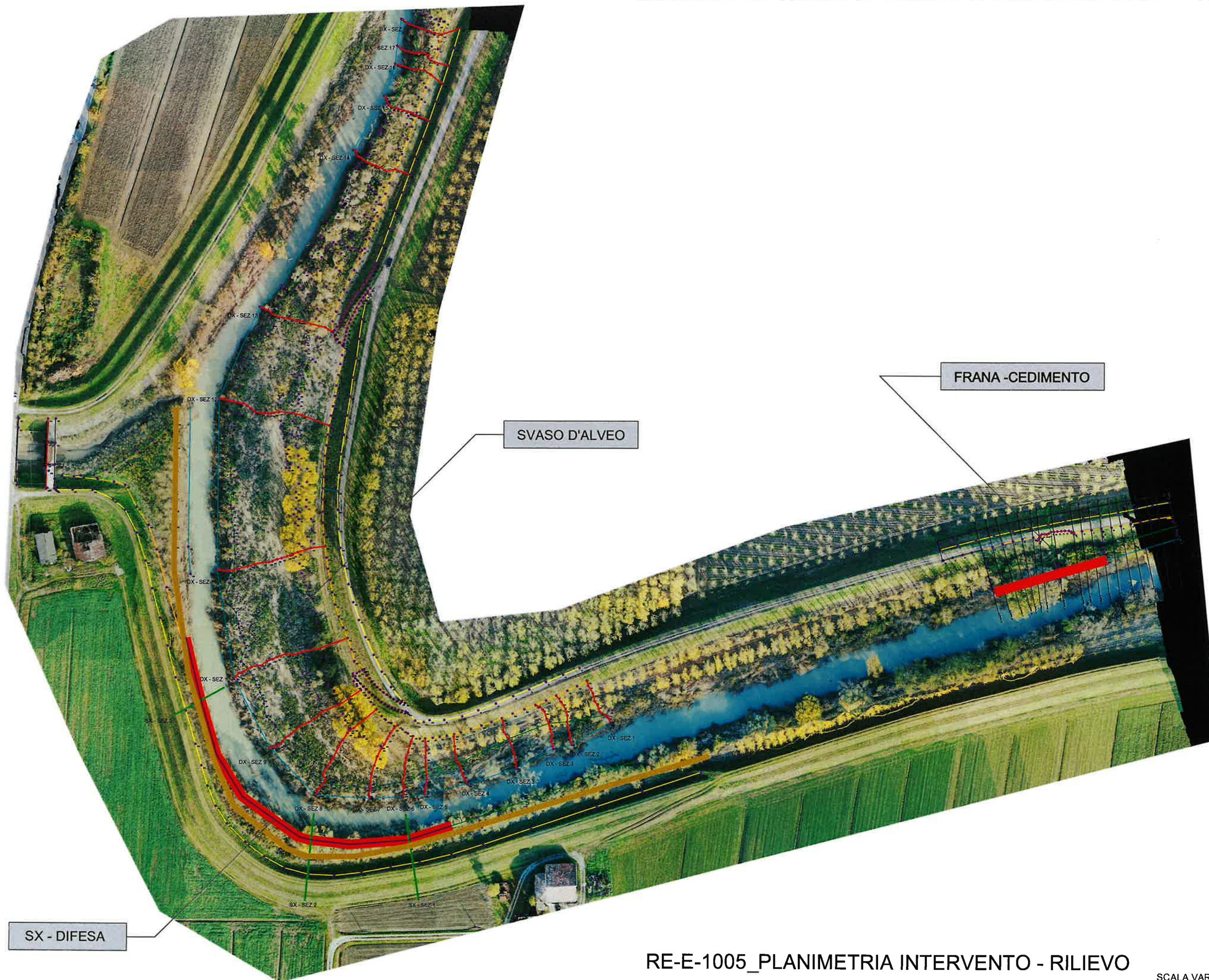
REV.01

DATA:

04 GIU 2024



RE-E-1005 -INQUADRAMENTO AREA CANTIERE



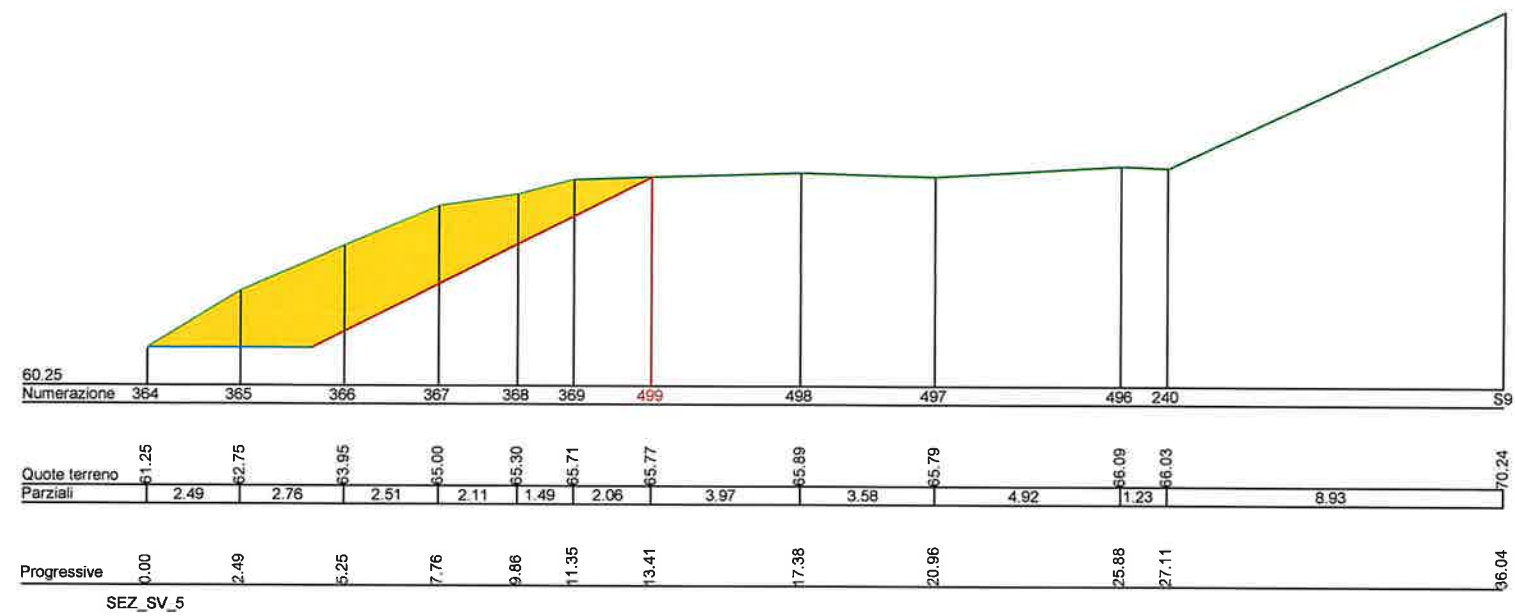
RE-E-1005_PLANIMETRIA INTERVENTO - RILIEVO

SCALA VARIA

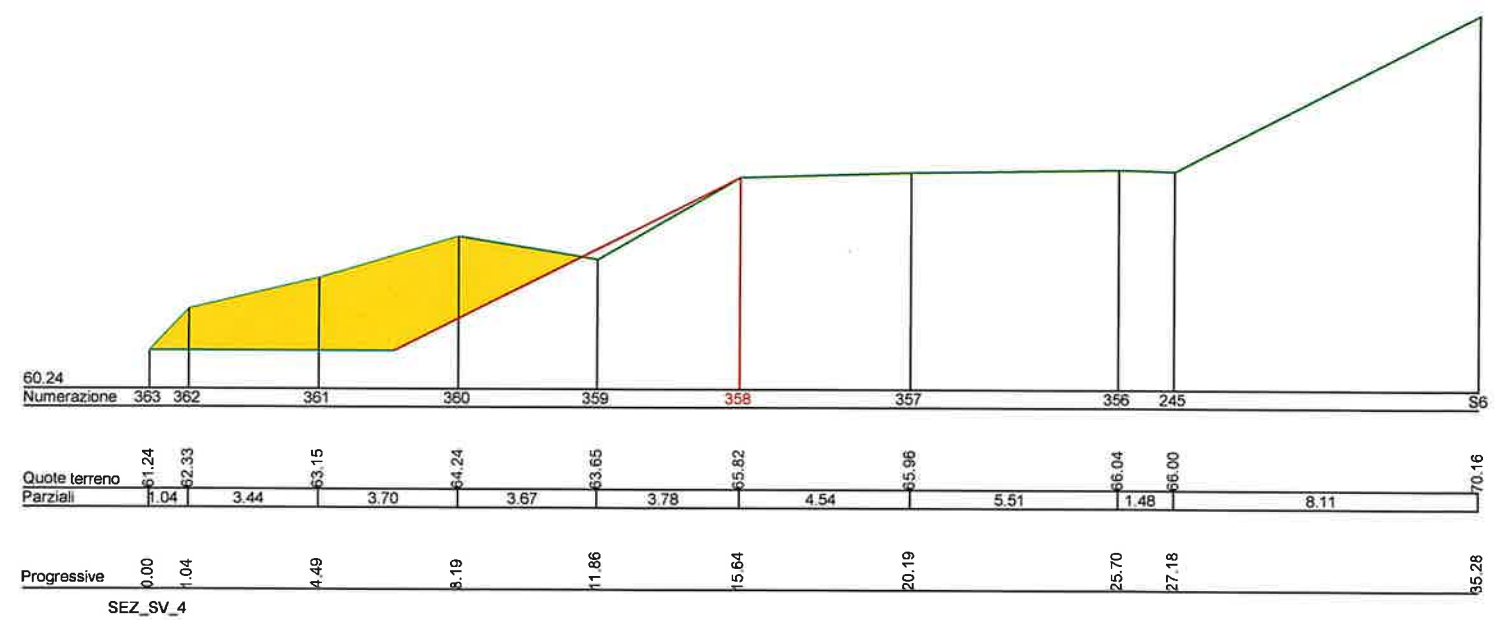
(RE-E-1005) LAVORI URGENTI DI RIPRESA FRANA SPONDALE IN DESTRA IDRAULICA DEL F. ENZA IN CORRISPONDENZA DI C.NA BERNUZZA E DISBOSCAMENTO SPONDALE E RISEZIONAMENTO ALVEO PER MIGLIORAMENTO CONDIZIONI DI DEFLUSSO IN TRATTI SALTUARI NEL COMUNE DI BRESCELLO - COD. CUP B88H23000840001

SEZIONE	AREA SEZIONE	VALENZA	VOLUME
	0,00		
		50,00	439,75
SEZ_SVASO_4	17,59		
		29,33	538,21
SEZ_SVASO_5	19,11		
		15,62	424,79
SEZ_SVASO_6	35,28		
		10,62	396,02
SEZ_SVASO_7	39,30		
		15,65	982,43
SEZ_SVASO_8	86,25		
		20,75	2.375,15
SEZ_SVASO_9	142,68		
		23,80	3.298,09
SEZ_SVASO_10	134,47		
		37,39	5.717,49
SEZ_SVASO_11	171,36		
		49,61	7.236,86
SEZ_SVASO_12	120,39		
		81,59	10.915,93
SEZ_SVASO_13	147,19		
		49,29	6.138,82
SEZ_SVASO_14	101,90		
		88,24	6.297,25
SEZ_SVASO_15	40,83		
		31,31	1.040,43
SEZ_SVASO_16	25,63		
		21,77	362,04
SEZ_SVASO_17	7,63		
		21,45	440,37
SEZ_SVASO_18	33,43		
		25,00	417,88
	0,00		
SVASO - SOMMANO TOTALI MC.			47.021,51

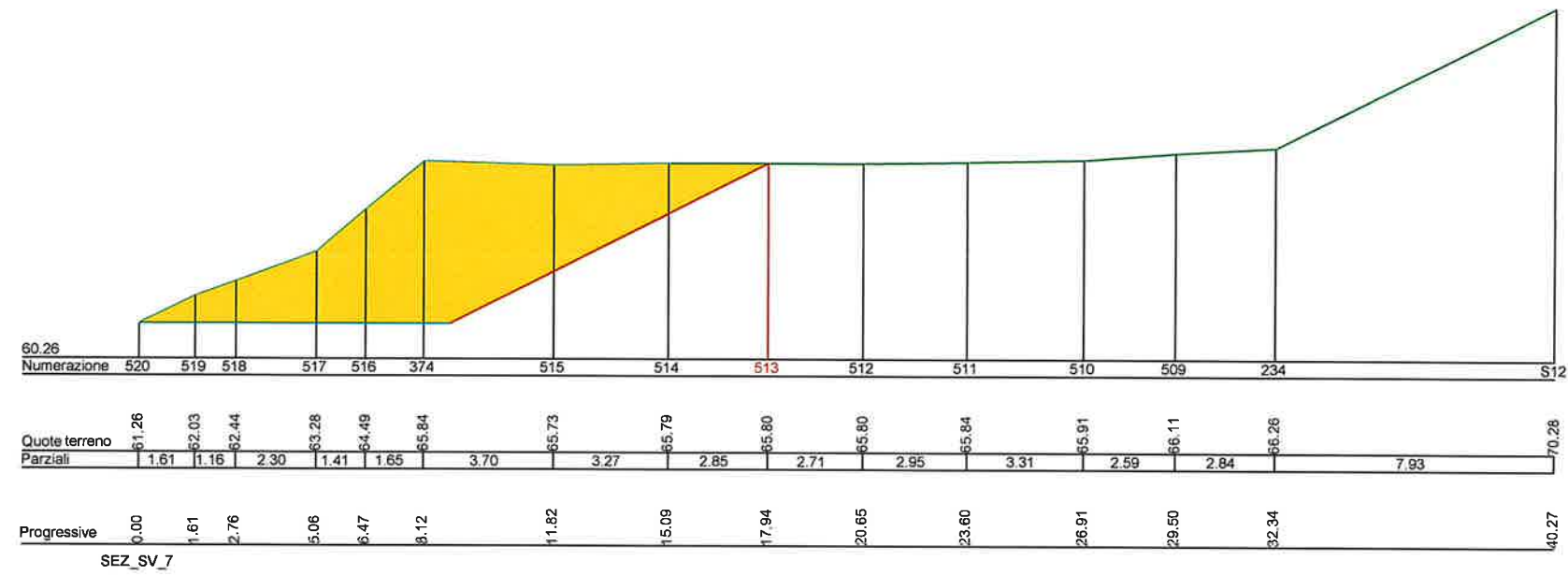
RE-E-1005_SVASO_SEZ 5



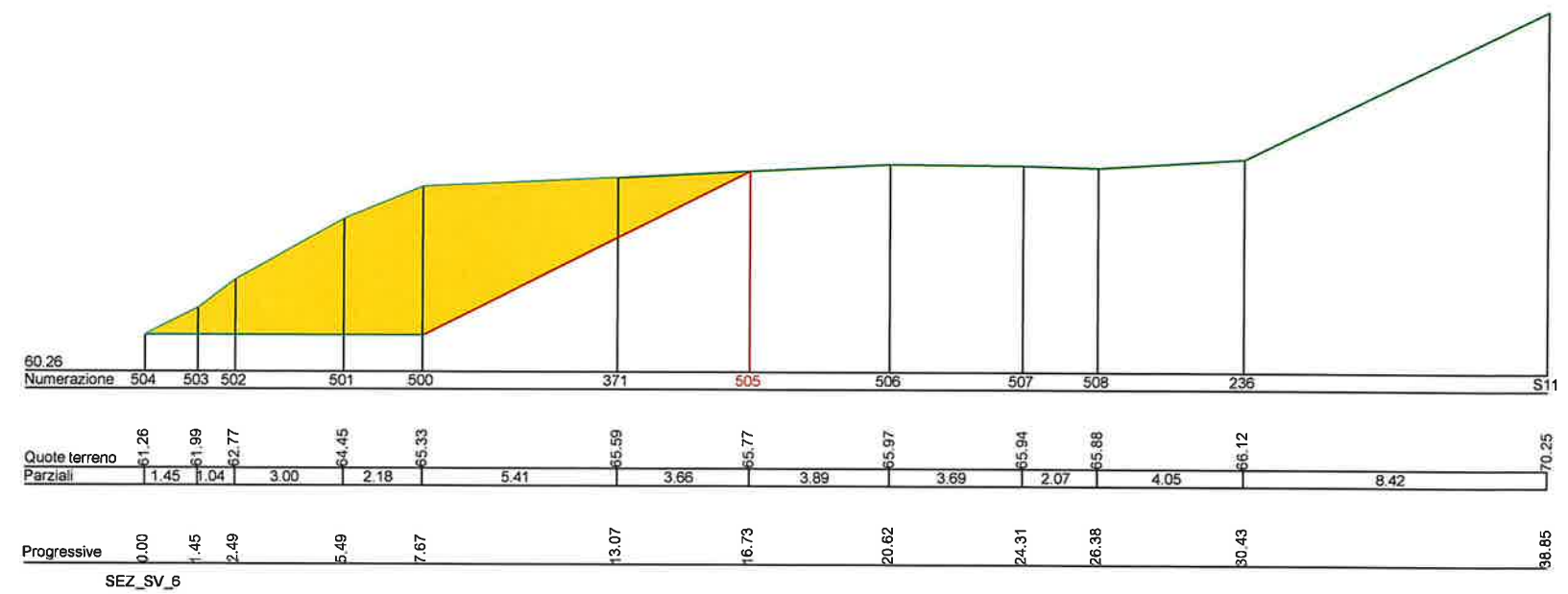
RE-E-1005_SVASO_SEZ 4



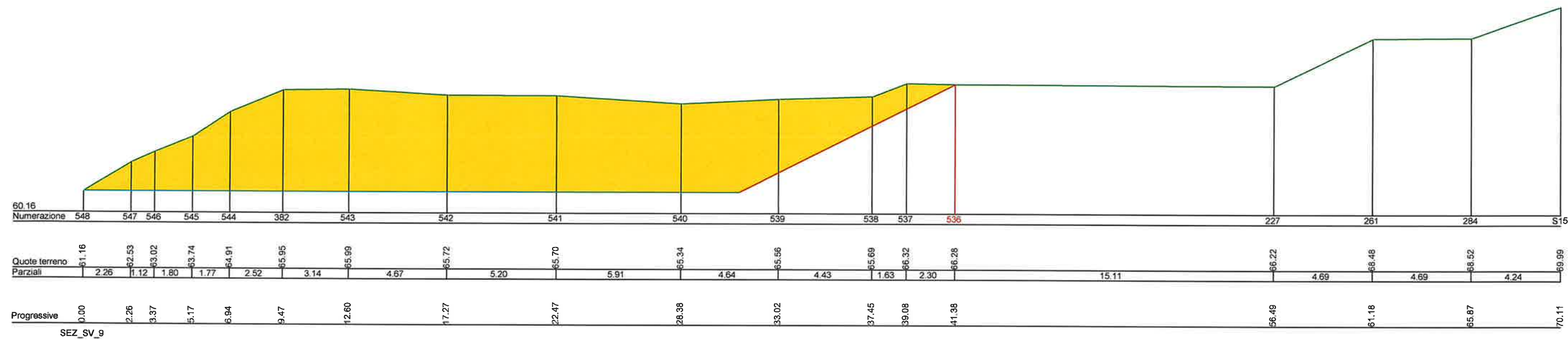
RE-E-1005_SVASO_SEZ 7



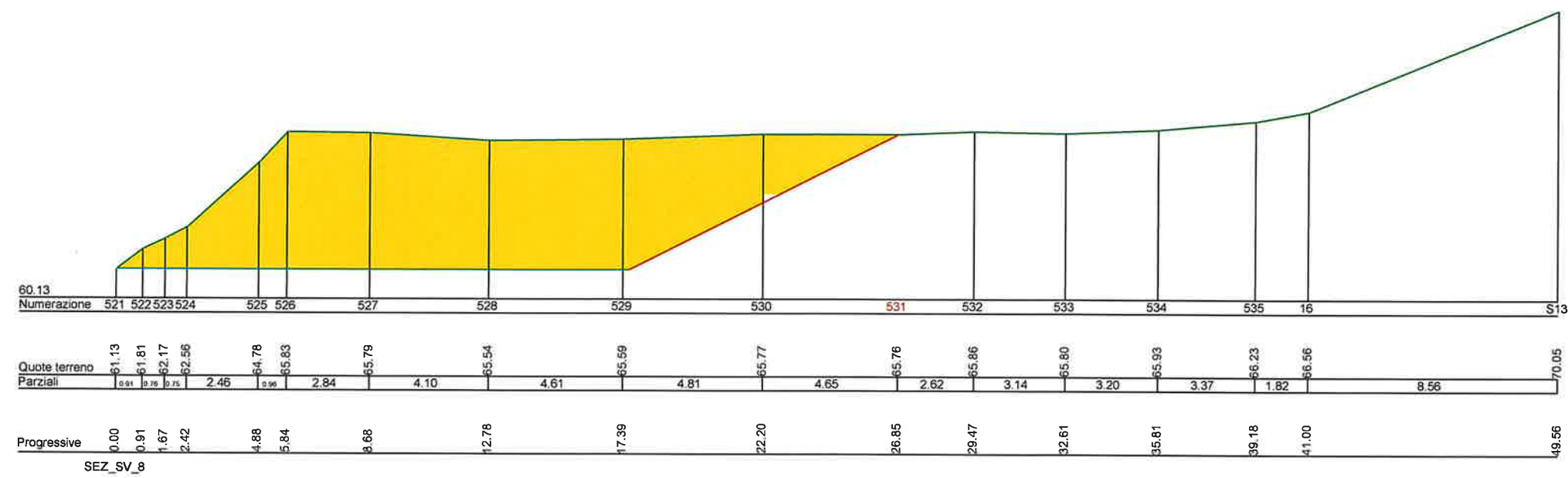
RE-E-1005_SVASO_SEZ 6



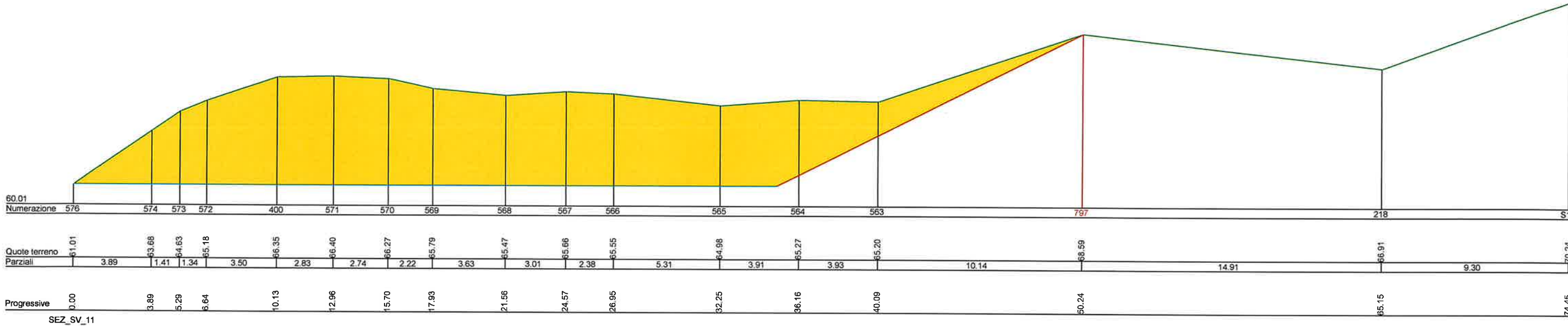
RE-E-1005_SVASO_SEZ 9



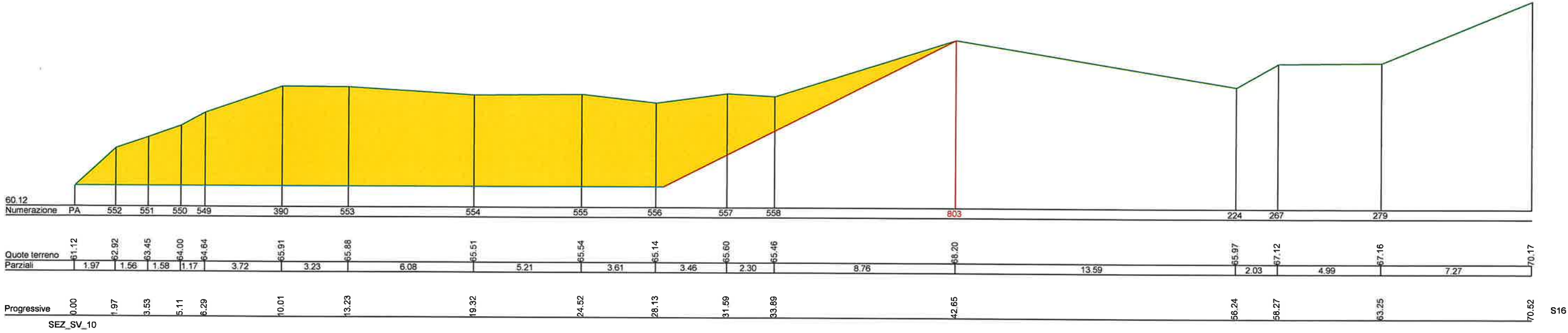
RE-E-1005_SVASO_SEZ 8



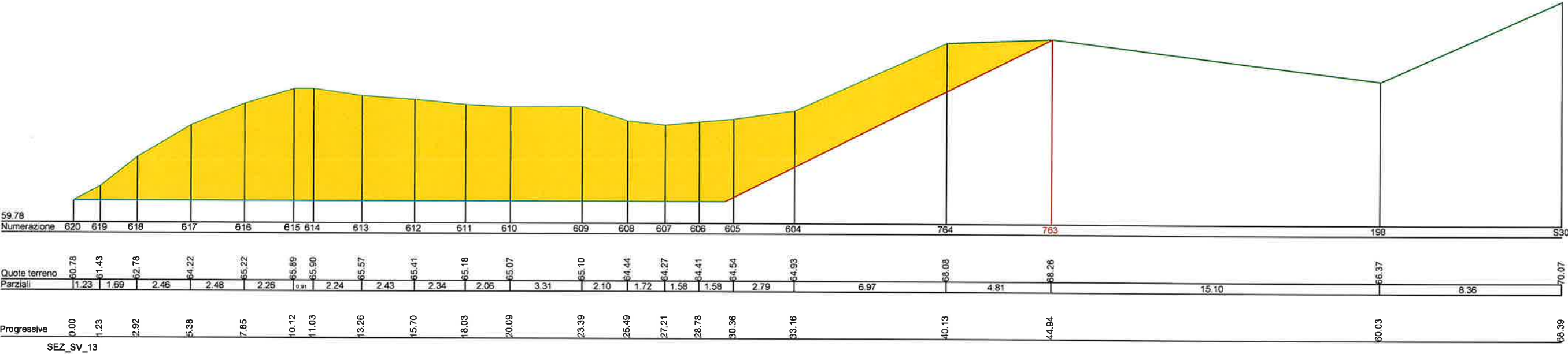
RE-E-1005_SVASO_SEZ 11



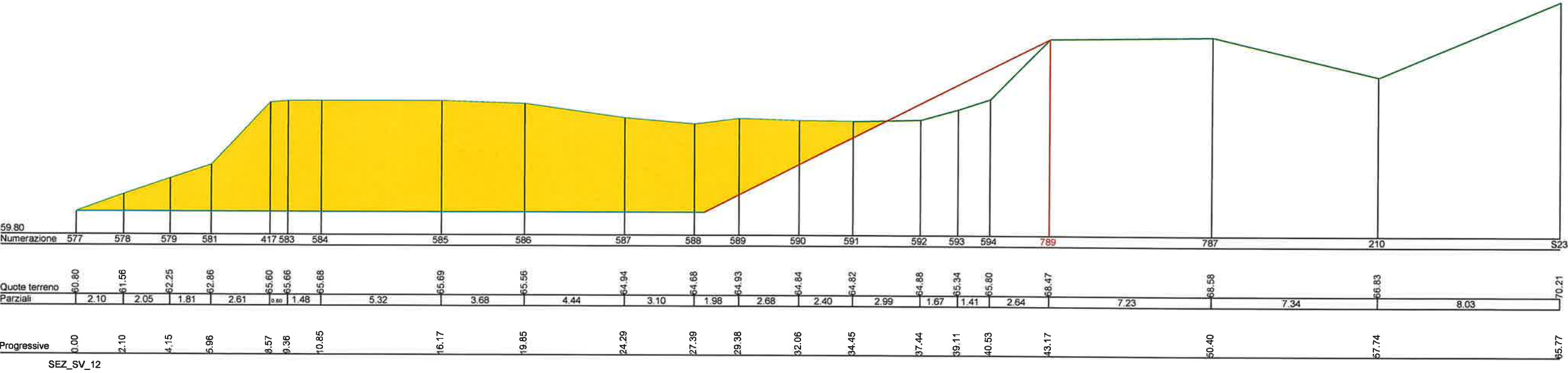
RE-E-1005_SVASO_SEZ 10



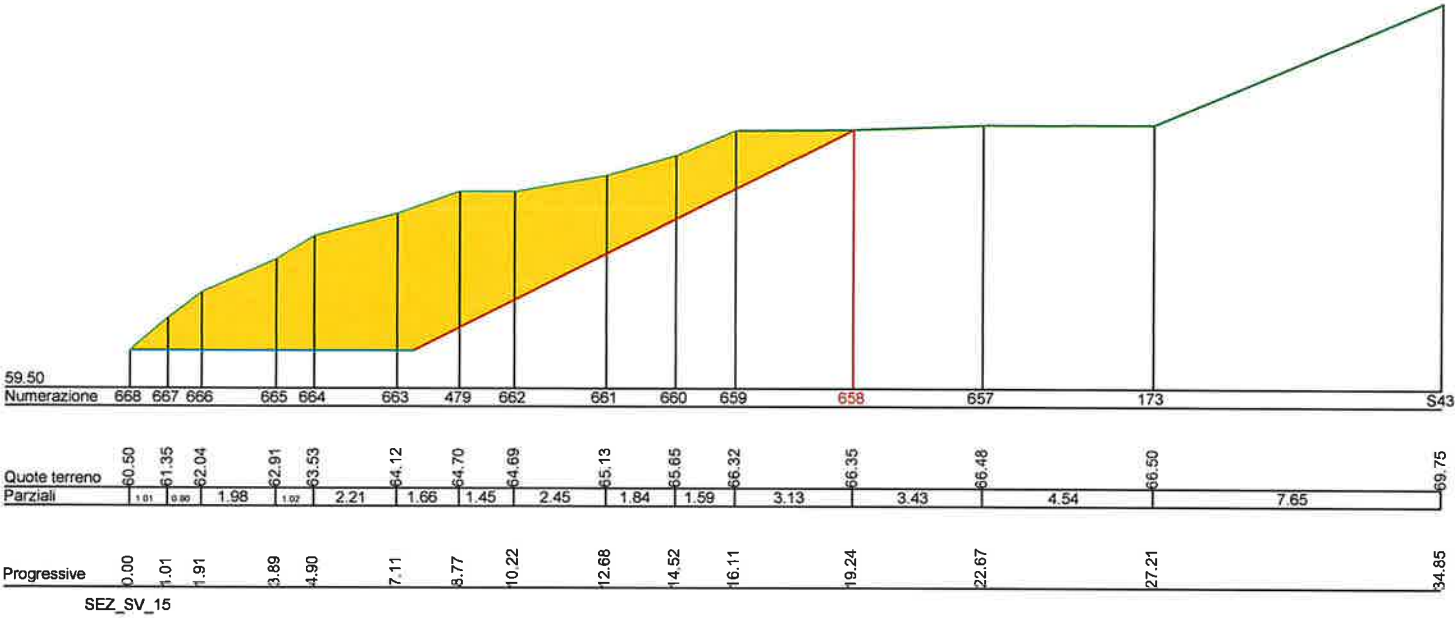
RE-E-1005_SVASO_SEZ 13



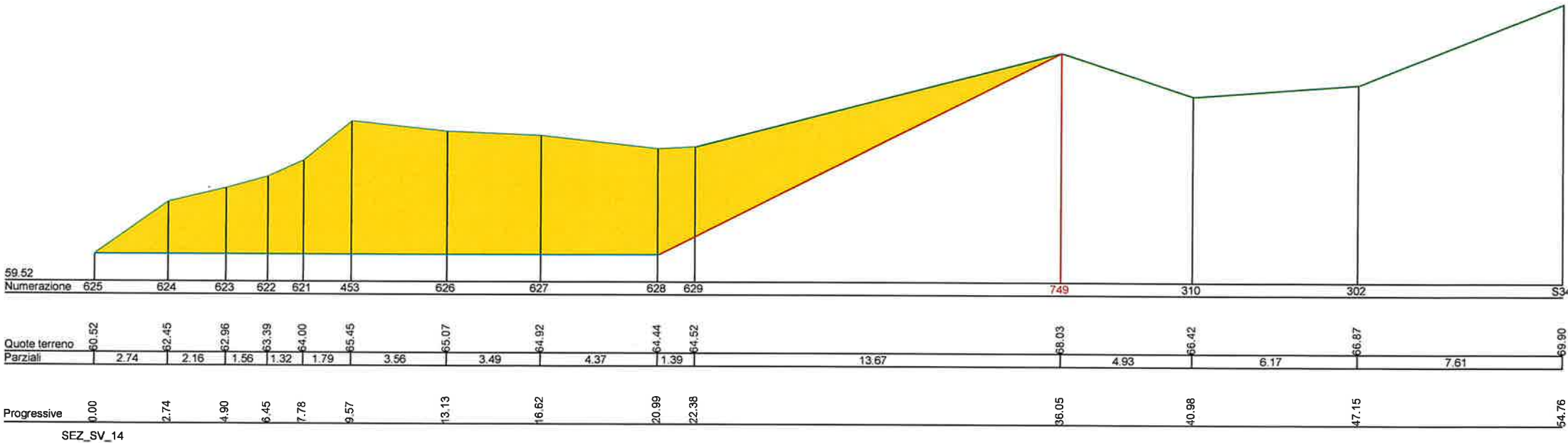
RE-E-1005_SVASO_SEZ 12



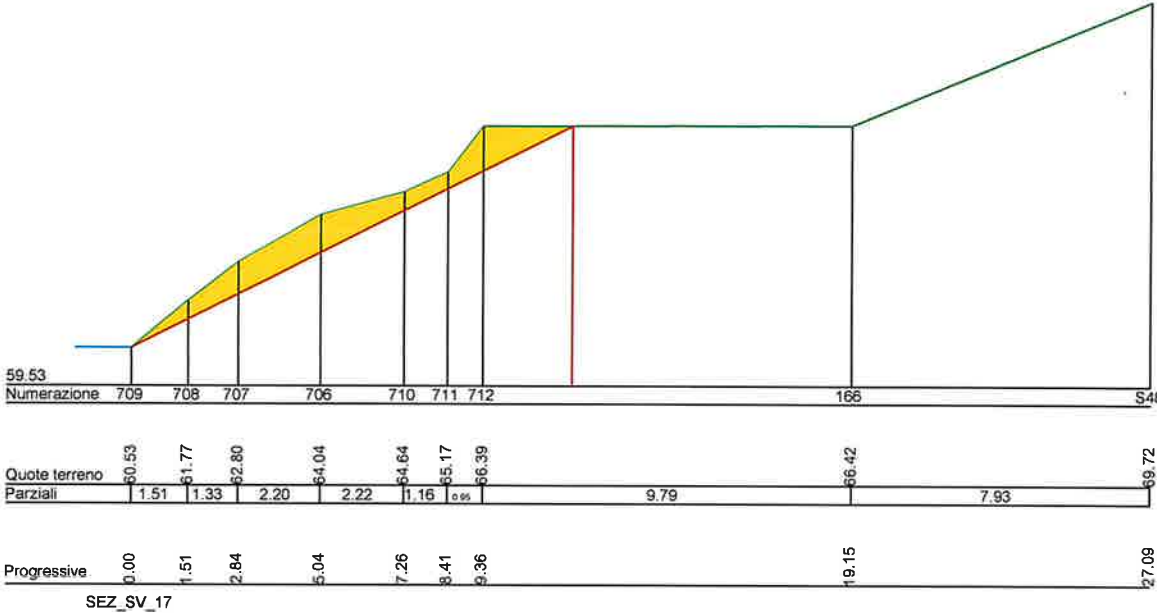
RE-E-1005_SVASO_SEZ 15



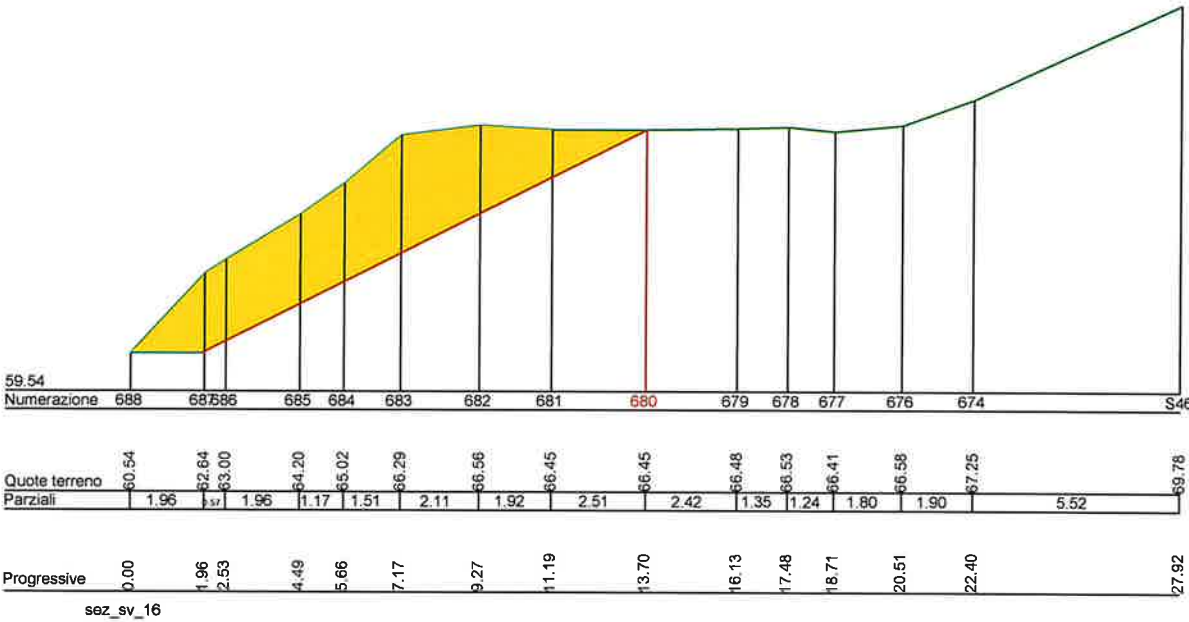
RE-E-1005_SVASO_SEZ 14



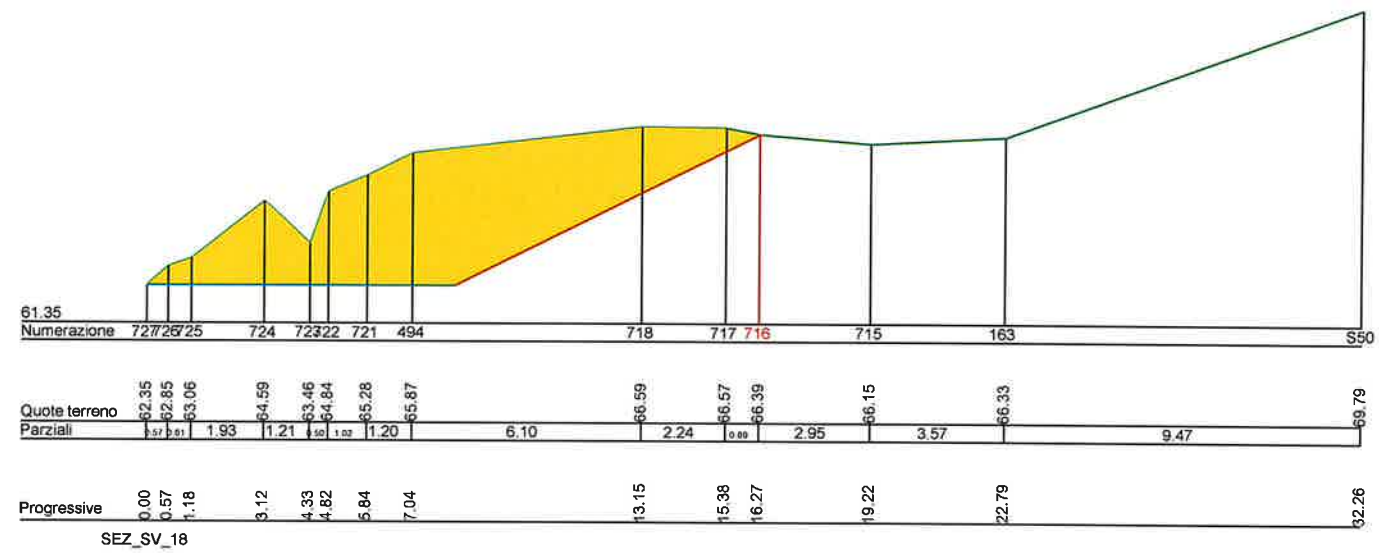
RE-E-1005_SVASO_SEZ 17

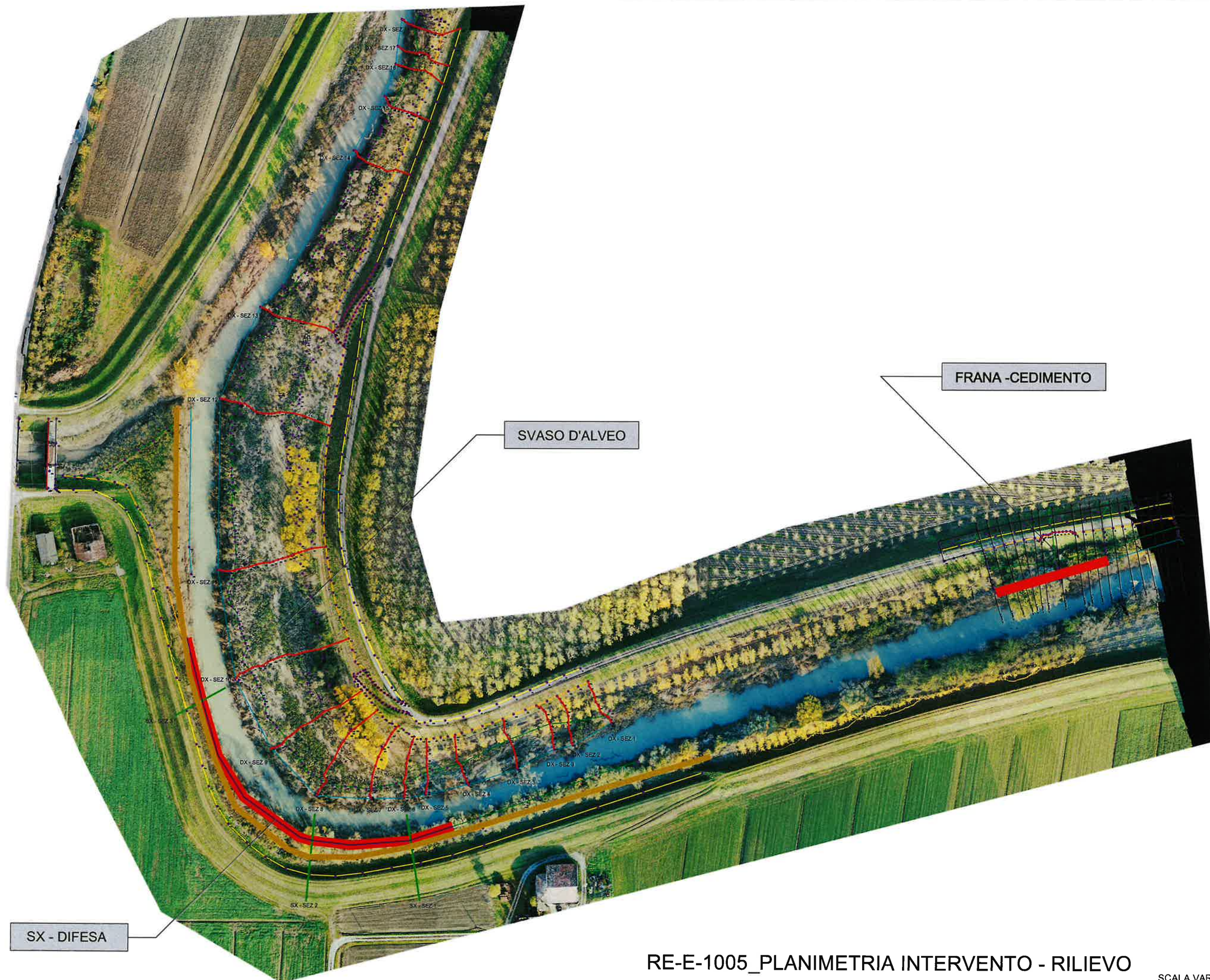


RE-E-1005_SVASO_SEZ 16



RE-E-1005_SVASO_SEZ 18



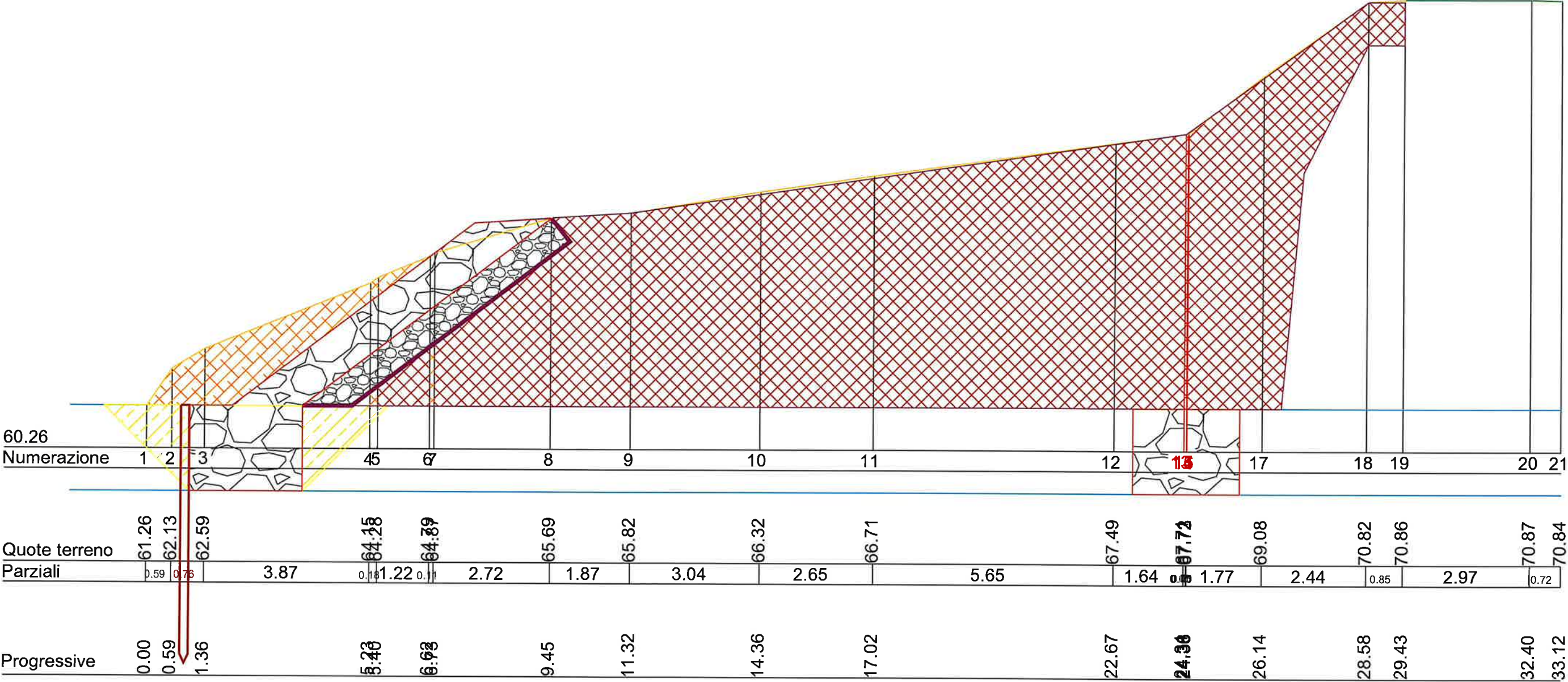


RE-E-1005_PLANIMETRIA INTERVENTO - RILIEVO

SCALA VARIA

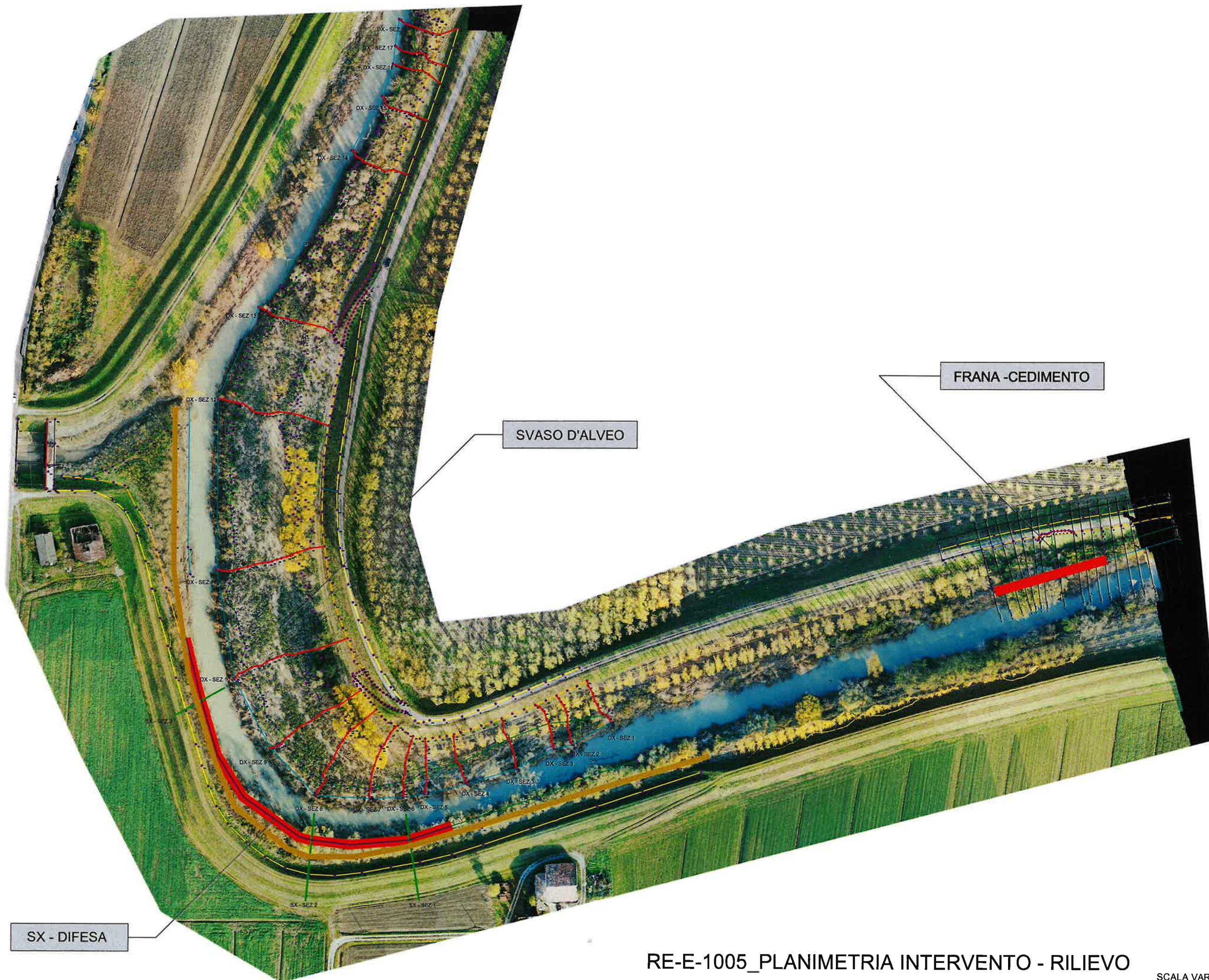
RE-E-1005_DX - SEZ TIPO CEDIMENTO/ DIFESA

Valenza 50,00 m



FRANA_12

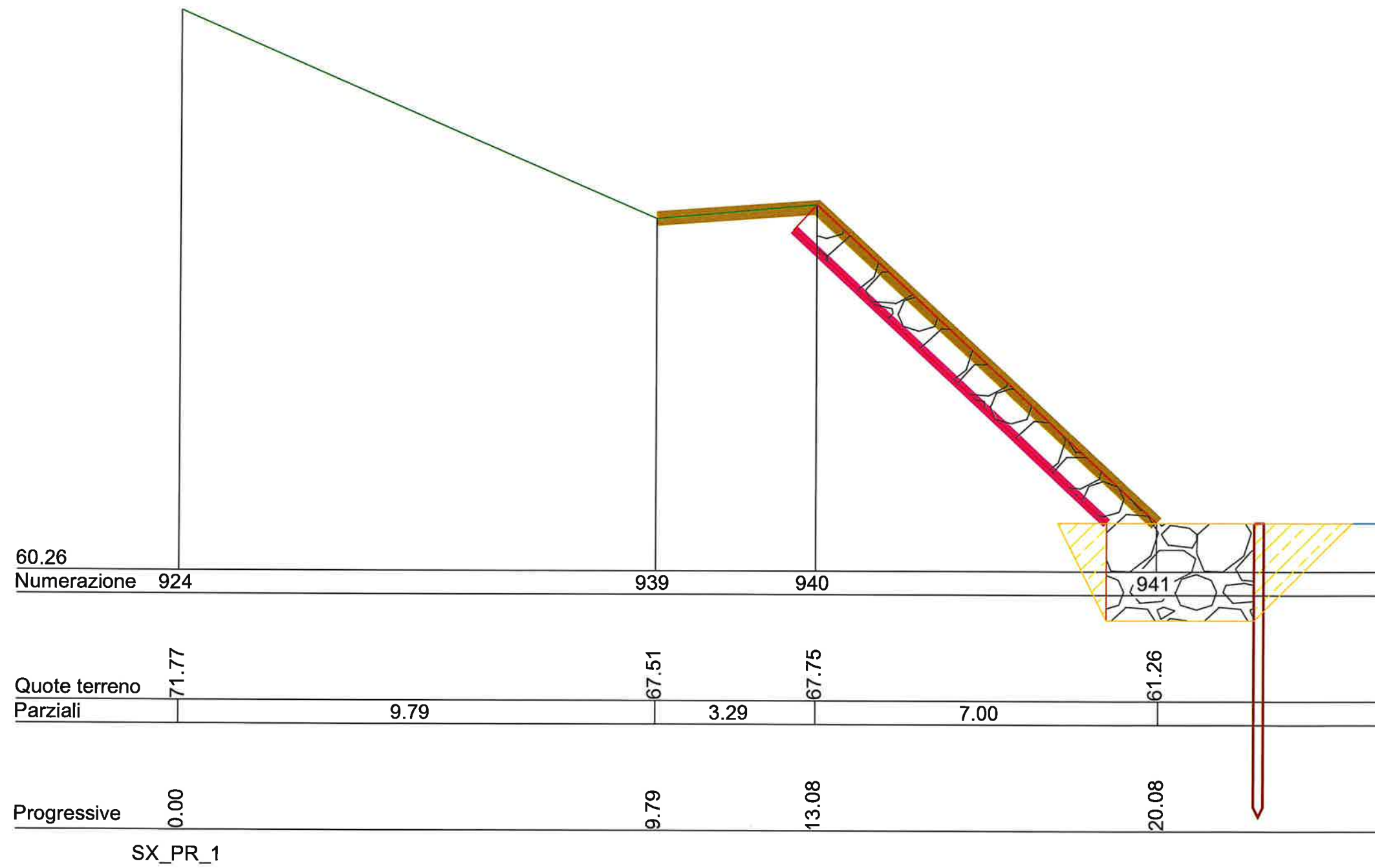
SCALA 1:100



RE-E-1005_PLANIMETRIA INTERVENTO - RILIEVO

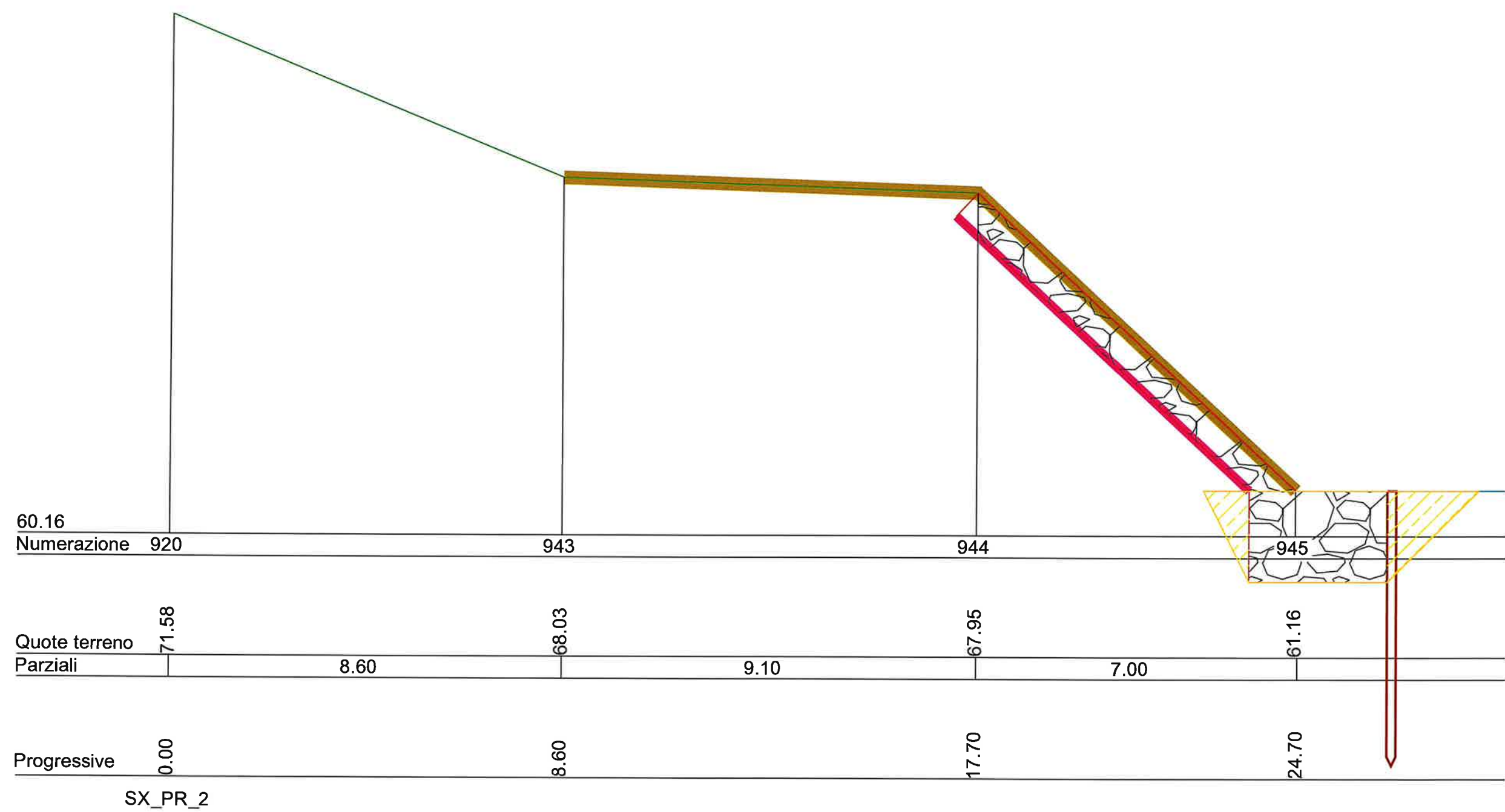
SCALA VARIA

RE-E-1005_SX - SEZ 1 DIFESA



SCALA 1:100

RE-E-1005_SX - SEZ 2 DIFESA



SCALA 1:100

RE-E-1005_SX - SEZ 3 DIFESA

